



# SOUTH MAIN

WWW.SOUTHMAINCO.COM  
PO BOX 5246  
BUENA VISTA, CO 81211  
719.395.4714

## COMMERCIAL SPACE FOR LEASE

807 & 809 SOUTH MAIN STREET  
470-1,960 SQUARE FEET  
\$650-\$2,300 PER MONTH



## FEATURES

BRAND NEW CONSTRUCTION LOCATED ON CORNER LOT IN SOUTH MAIN'S CENTRAL BUSINESS DISTRICT. TWO ATTACHED BUILDINGS WITH SHARED OR SEPARATE SPACE. 1-MINUTE WALK FROM THE RIVER PARK AND EDDYLINE BREWERY. IDEAL FOR RETAIL USE OR RESTAURANT USE WITH IMPROVEMENTS.

- UNDER CONSTRUCTION & AVAILABLE SPRING 2009
- SIDEWALK SEATING PERMITTED
- MULTIPLE CONFIGURATIONS AVAILABLE
- AMPLE ON-STREET PARKING

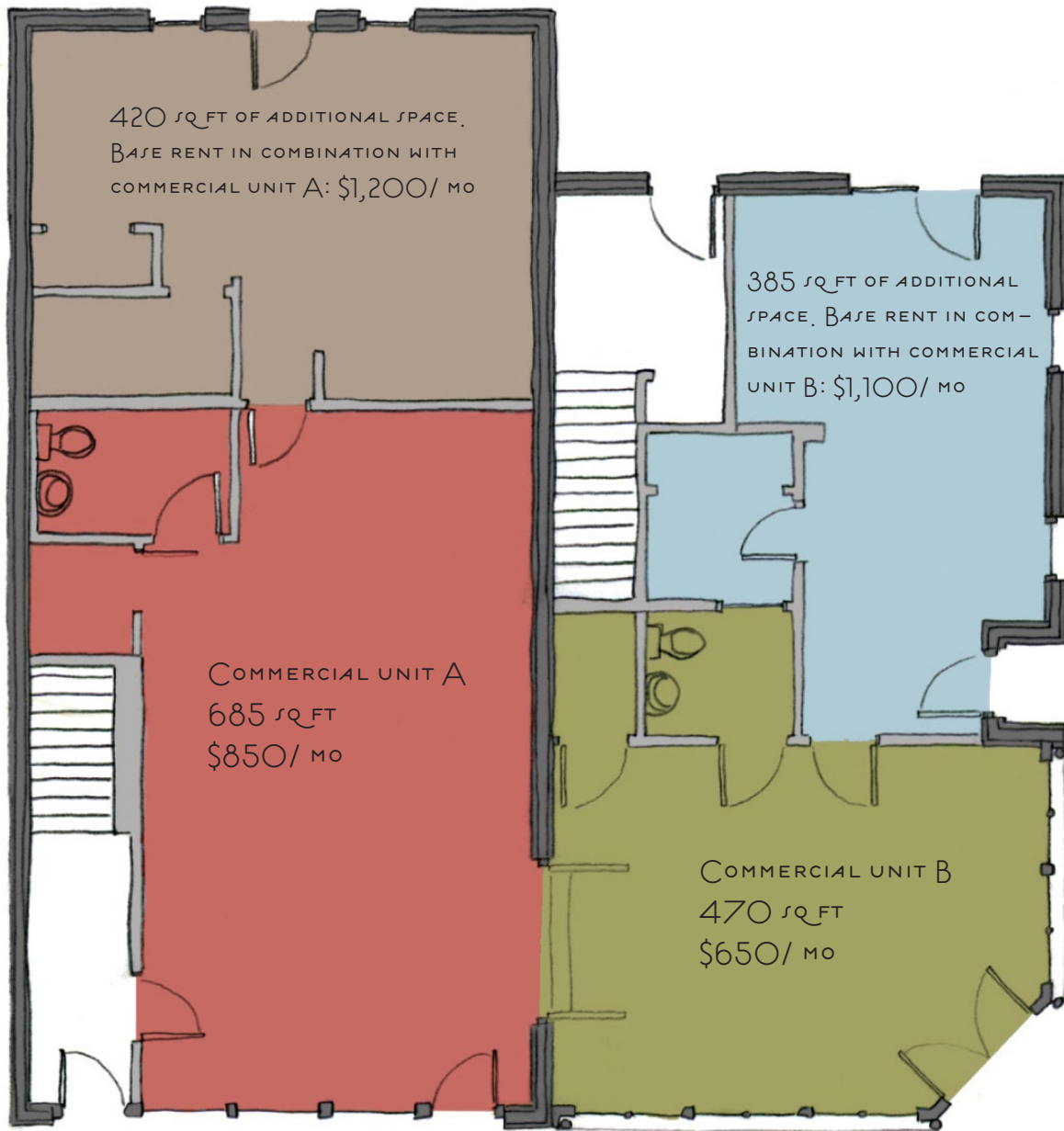


# SOUTH MAIN

WWW.SOUTHMAINCO.COM  
PO BOX 5246  
BUENA VISTA, CO 81211  
719.395.4714

807 SOUTH MAIN ST.  
COMMERCIAL UNIT A: 685 sq ft  
OPTIONAL SPACE IN REAR OF BUILDING: 420 sq ft

809 SOUTH MAIN ST.  
COMMERCIAL UNIT B: 470 sq ft  
OPTIONAL SPACE IN REAR OF BUILDING: 385 sq ft



SHOPFRONT